

Geological Wellsite Supervision

Global Energy Consultancy

RPS is a global, multi-disciplinary consultancy providing integrated technical, commercial, and project management support across geoscience, engineering, and HS&E. We help clients develop energy resources across the full lifecycle, combining technical expertise with a strong focus on environmental and safety performance.

Proven Wellsite Expertise

With over 40 years of experience, RPS delivers wellsite supervision services worldwide. Our team of 200+ highly trained geological well operations specialists has supervised more than 15,000 wells across diverse environments—from the North Slope of Alaska and the Gulf of Mexico to deepwater West Africa, the North Sea, and the Middle East. We support all major E&P companies.

High-Calibre People

We invest heavily in training, quality, and long-term career development to ensure we provide the highest calibre wellsite geologists.

Our geologists offer:

Advanced academic qualifications
Extensive core logging experience in the lab
Post-drill cutting analysis across multiple basins

Their expertise ensures they are very well versed in complex structural plays, depositional environments, and facies interpretations—and to adapt effectively to any drilling environment without limitation.

Global Reach, Integrated Delivery

Our truly international presence enables us to deliver coordinated and integrated projects wherever our clients operate - domestic or throughout the world.

What we provide

- Wellsite Geology - Domestic & International
- Operations Geology
- Remote Geosteering Services
- Wireline log quality control
- LWD / MWD quality control
- Wellsite biostratigraphy
- Petrophysical support
- Comprehensive final well reports
- Drill cutting & core studies
- StarSteer geosteering software
- XRF & XRD Analysis
- Gas Chromatography with Mass Spectrometry

NAm Conventional & Unconventional Wellsite

- Permian Basin
- Anadarko Basin
- DJ Basin
- Appalachian Basin
- Williston Basin
- Gulf of Mexico
- Alaska

Emerging Resources

- Potash
- Geothermal
- CCUS
- Helium
- Lithium



THE RPS DIFFERENCE

With the current technological advances in drilling, the speed and the targeting of more difficult formations has increased. It is more important than ever to have expert level geological supervision to ensure ideal well placement to gain as much production as possible. Our associates have decades of experiences across the globe, encompassing numerous basins and formations. They've seen it all! Onsite petrographic sample analysis on detailed striplogs, comprehensive daily reporting standards, meticulous data collection and implementation, expert knowledge of real-time geosteering software provide our clients immersive coverage to drill them the best well possible at competitive rates.

Shale plays in every basin have small acreage positions where organic deposition is optimal. There is a perfect mixture of carbonates, clays, and organics that occur inside of small sinks of A+ rock. Shales are not homogeneous, not even within your own 10,000-foot lateral. Our associates interpret reservoir quality, which aids in optimal frac port placement and helps to explain deviations in production results.



With our expert associates, you can rely on us to provide accurate and detailed information throughout the drilling process. Our services include:

Proportional lithology breakdown and description of accessory minerals: We accurately analyze and describe the composition of rock formations, including the breakdown of different lithologies with the identification of accessory minerals and microfractures.

Grain size, sorting, and rounding descriptions: We assess the grain size distribution, sorting, and rounding of sedimentary particles, providing valuable insights into reservoir characteristics and depositional environments.

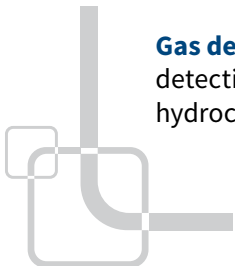
Type and degree of cementation: Our experts evaluate the type and degree of cementation within rock formations, aiding in reservoir characterization and understanding fluid flow properties.

Observation of fluorescence and cut fluorescence to determine hydrocarbon presence and interpreted weight (API): We perform detailed observations of fluorescence and cut fluorescence to identify the presence of hydrocarbons and estimate their weight using the American Petroleum Institute (API) scale.

Porosity type and estimation: We determine the type of porosity present in the reservoir rock and provide estimations of its extent, aiding in reservoir quality assessment and hydrocarbon storage potential.

Permeability estimation (Sneider or Archie classification): Our team assesses permeability using established methods such as the Sneider or Archie classification, providing valuable information on fluid flow characteristics within the reservoir.

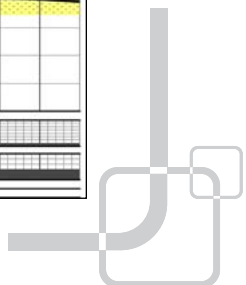
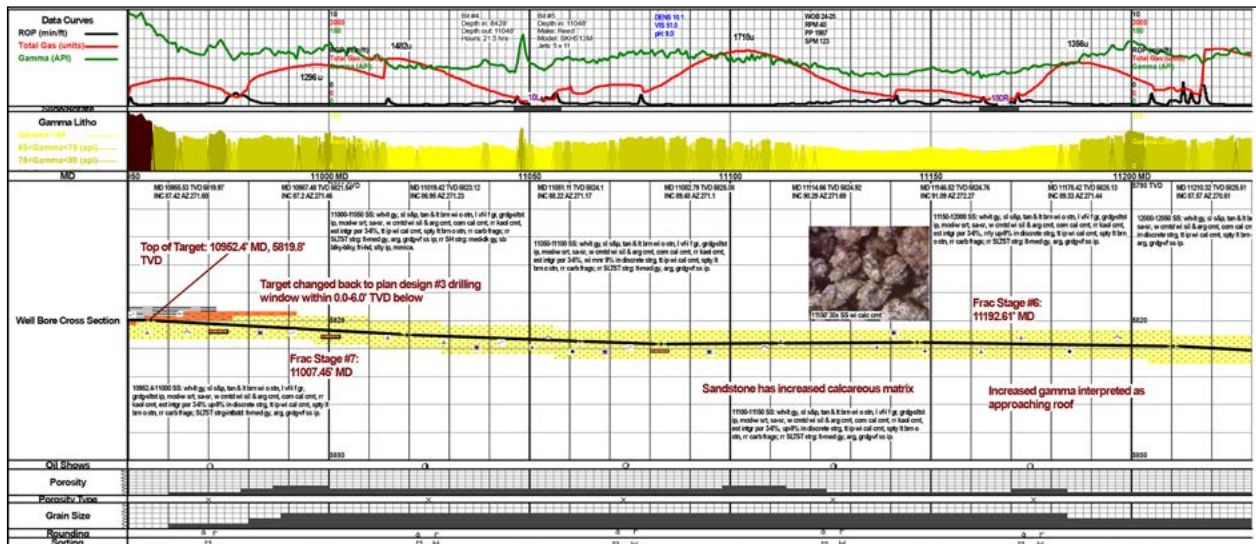
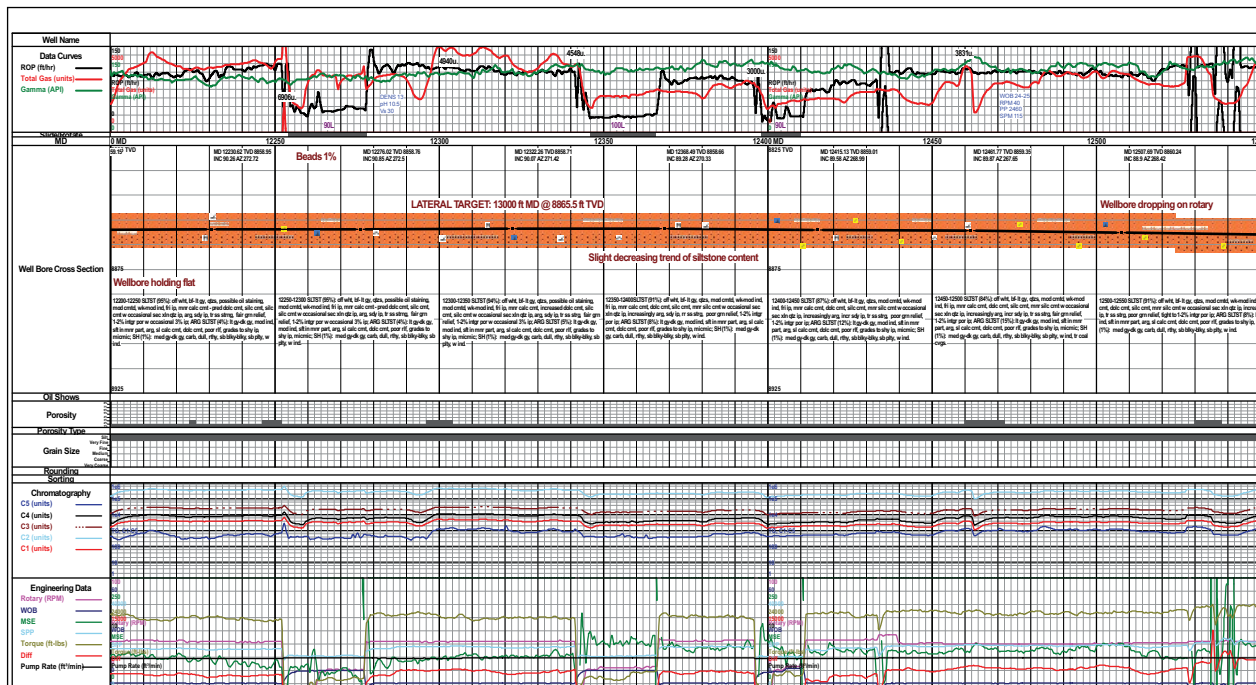
Gas detector supervision and detailed interpretation of chromatograph curves: We supervise gas detection activities and provide in-depth interpretation of chromatograph curves, enabling accurate analysis of hydrocarbon content and potential reservoir zones.

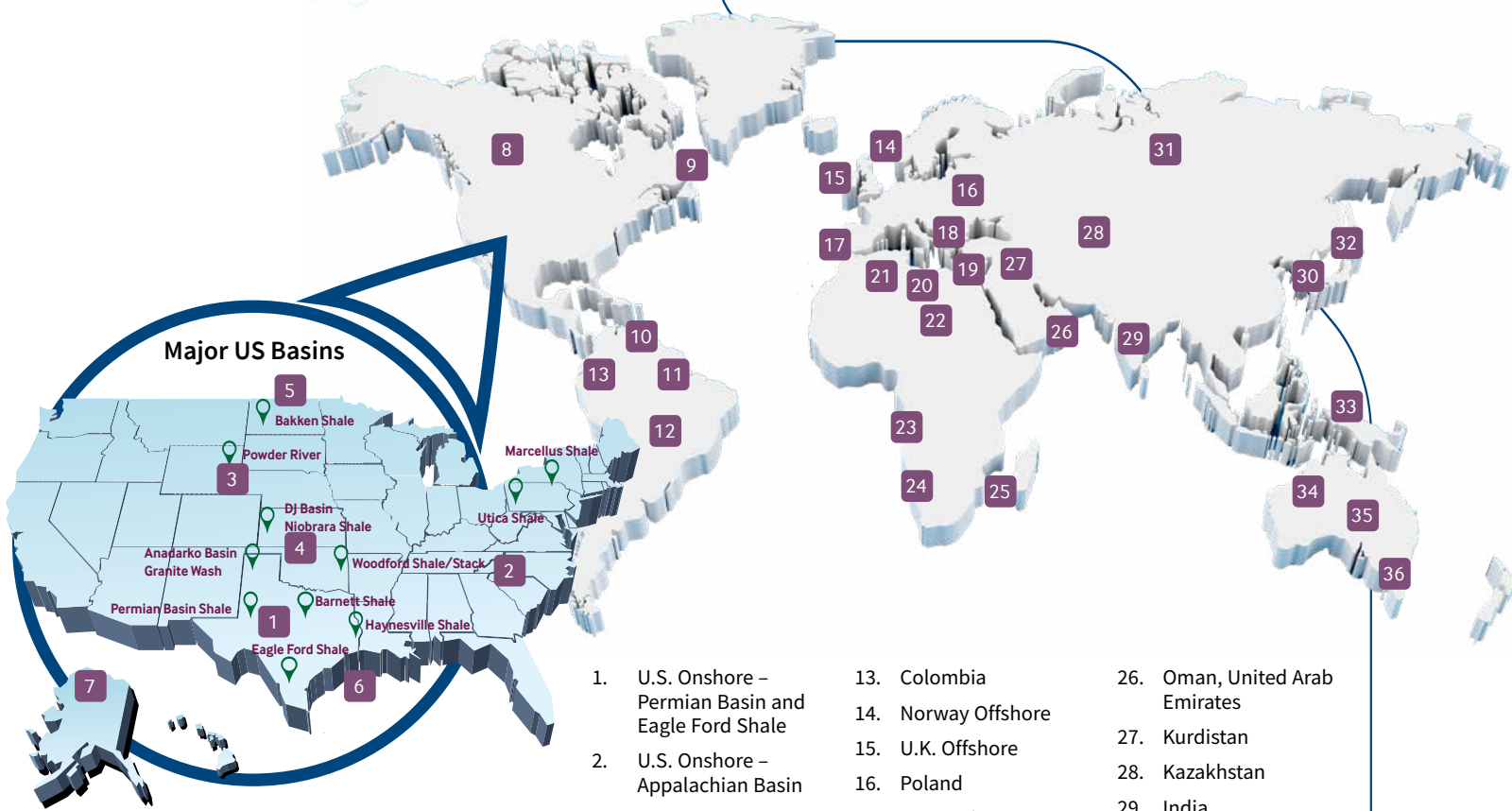


THE RPS Standard of ABSOLUTE DELIVERY

RPS constructs both build and lateral striplogs that entail every detail with regards to drilling and gas curves (exportable to an LAS file), hydrocarbon shows, and detailed sample descriptions. Anything relevant to your operation, such as target changes and reservoir quality will be documented on the striplog. There is nothing more frustrating than looking back at old well files and having questions!

WellSight Systems™ is the best striplog software on the market. Nothing else even comes close!





Major US Basins

1. U.S. Onshore – Permian Basin and Eagle Ford Shale
2. U.S. Onshore – Appalachian Basin
3. U.S. Onshore – DJ Basin
4. US Onshore – Anadarko Basin
5. US Onshore – Williston Basin
6. US Offshore – Gulf of Mexico
7. Alaska – North Slope
8. Canada – Western CDN Sedimentary Basin
9. Canada – East Coast
10. Trinidad and Tobago
11. Guyana and Suriname
12. Brazil
13. Colombia
14. Norway Offshore
15. U.K. Offshore
16. Poland
17. Portugal
18. Albania
19. Offshore Mediterranean (Cyprus, Egypt and Israel)
20. Libya
21. Algeria and Tunisia
22. Chad
23. West Africa
24. South Africa, Namibia
25. Mozambique, Tanzania, Kenya, Madagascar
26. Oman, United Arab Emirates
27. Kurdistan
28. Kazakhstan
29. India
30. China
31. Russian Federation
32. Sakhalin
33. Southeast Asia Multiple countries, multiple clients
34. Australia – Northwest Shelf
35. Australia – Cooper Basin
36. Australia – Gippsland and Otway Basins

CONTACT

Dean Malhiot, P. Geo.

Technical Director
NAM Well Operations

T: +1 403 710 6193
E: dean.malhiot@tetrattech.com

Calgary, Alberta

2000 Bow Valley Sq. 4
250 - 6 Avenue SW
Calgary, Alberta T2P 3H7

Houston, Texas

1500 CityWest Boulevard
Suite 1000
Houston, Texas 77042