

Geological Wellsite Supervision

RPS is a global, multi-disciplinary consultancy, providing integrated technical, commercial and project management support in the fields of geoscience, engineering and HS&E to the energy sector. RPS can help clients develop their energy resources across the complete life-cycle, combining our technical and commercial skills with an extensive knowledge of environmental and safety issues.

RPS has been providing wellsite supervision, both domestically and internationally for over 40 years. RPS has developed a worldwide team of over 200 trained geological well operations personnel. This team has supervised over 15,000 wells from the North Slope of Alaska to the Gulf of Mexico, deep water West Africa, the North Sea and Middle East. Our clients include all major E&P companies.

Our truly international presence allows us to undertake coordinated and integrated projects throughout the world.

Our strategy has been to focus on training and quality, and to offer rewarding long term careers to our geologists. Our goal is to provide our clients the highest caliber wellsite geologist possible expanding their technical skills from conventional mudlogging. These individuals typically have advanced educations, extensive core logging experience in the lab, and have conducted post drill cutting analysis over various basins. Therefore, they are very well versed in complex structural plays, depositional environments, and facies interpretation. Their training and experience allows them to adapt their expertise to any drilling environment without limitation.

What we provide

- Wellsite Geology - Domestic & International
- Operations Geology
- Remote Geosteering Services
- Wireline log quality control
- LWD / MWD quality control
- Wellsite biostratigraphy
- Petrophysical support
- Comprehensive final well reports
- Drill cutting & core studies
- StarSteer & R-Steer geosteering software
- Wellsight Systems striplog software
- XRF & XRD Analysis
- Gas Chromatography with Mass Spectrometry

NAm Conventional & Unconventional Wellsite

- Permian Basin
- Anadarko Basin
- DJ Basin
- Appalachian Basin
- Williston Basin
- Gulf of Mexico
- Alaska



THE RPS DIFFERENCE

With the current technological advances in drilling, the speed and the targeting of more difficult formations has increased. It is more important than ever to have expert level geological supervision to ensure ideal well placement to gain as much production as possible. Our associates have decades of experiences across the globe, encompassing numerous basins and formations. They've seen it all! Onsite petrographic sample analysis on detailed striplogs, comprehensive daily reporting standards, meticulous data collection and implementation, expert knowledge of real-time geosteering software provide our clients immersive coverage to drill them the best well possible at competitive rates.

Shale plays in every basin have small acreage positions where organic deposition is optimal. There is a perfect mixture of carbonates, clays, and organics that occur inside of small sinks of A+ rock. Shales are not homogeneous, not even within your own 10,000-foot lateral. Our associates interpret reservoir quality, which aids in optimal frac port placement and helps to explain deviations in production results.

With our expert associates, you can rely on us to provide accurate and detailed information throughout the drilling process. Our services include:

Proportional lithology breakdown and description of accessory minerals: We accurately analyze and describe the composition of rock formations, including the breakdown of different lithologies with the identification of accessory minerals and microfractures.

Grain size, sorting, and rounding descriptions: We assess the grain size distribution, sorting, and rounding of sedimentary particles, providing valuable insights into reservoir characteristics and depositional environments.

Type and degree of cementation: Our experts evaluate the type and degree of cementation within rock formations, aiding in reservoir characterization and understanding fluid flow properties.

Observation of fluorescence and cut fluorescence to determine hydrocarbon presence and interpreted weight (API): We perform detailed observations of fluorescence and cut fluorescence to identify the presence of hydrocarbons and estimate their weight using the American Petroleum Institute (API) scale.

Porosity type and estimation: We determine the type of porosity present in the reservoir rock and provide estimations of its extent, aiding in reservoir quality assessment and hydrocarbon storage potential.

Permeability estimation (Sneider or Archie classification): Our team assesses permeability using established methods such as the Sneider or Archie classification, providing valuable information on fluid flow characteristics within the reservoir.

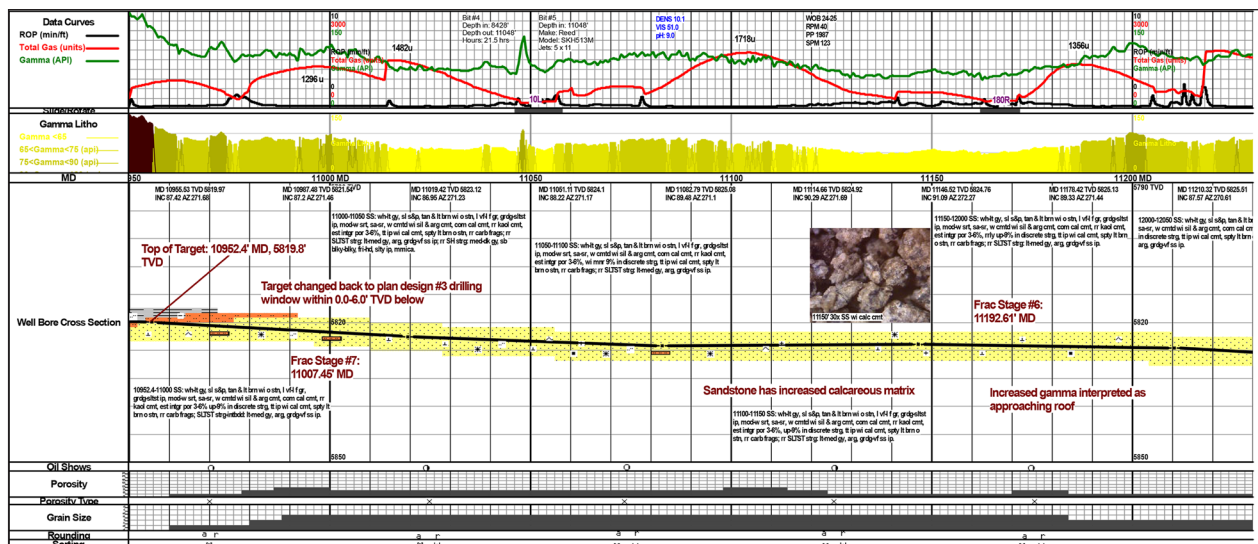
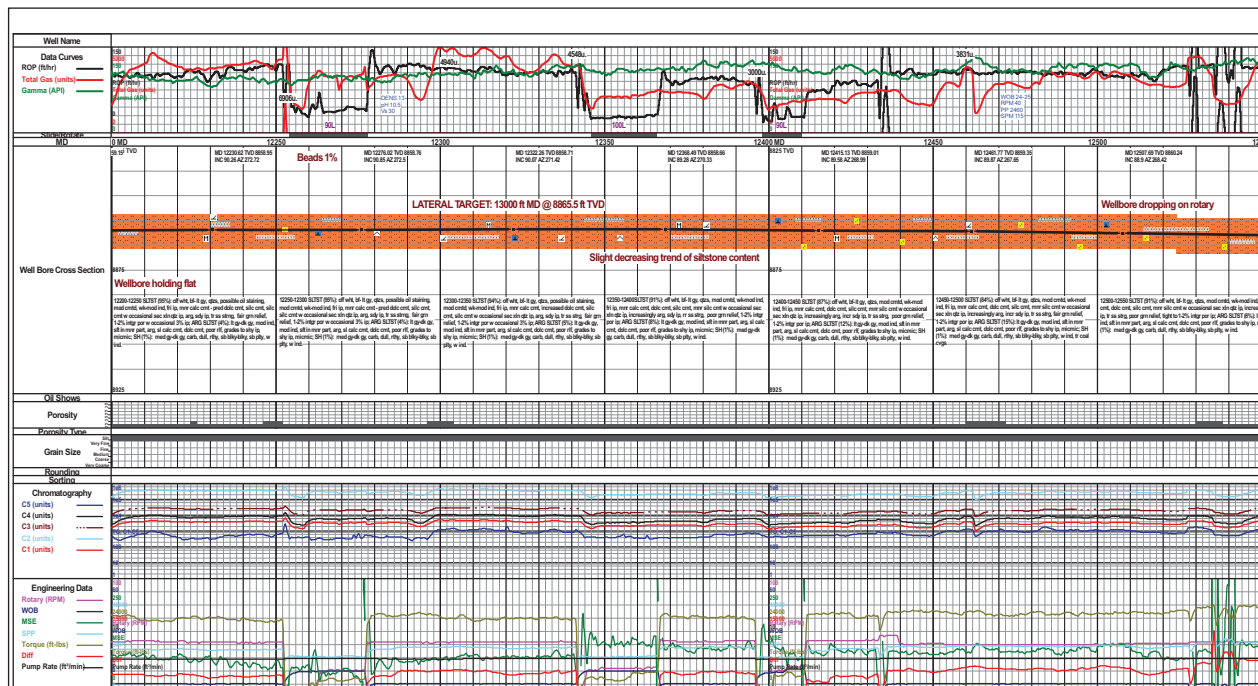
Gas detector supervision and detailed interpretation of chromatograph curves: We supervise gas detection activities and provide in-depth interpretation of chromatograph curves, enabling accurate analysis of hydrocarbon content and potential reservoir zones.



THE RPS Standard of ABSOLUTE DELIVERY

RPS constructs both build and lateral striplogs that entail every detail with regards to drilling and gas curves (exportable to an LAS file), hydrocarbon shows, and detailed sample descriptions. Anything relevant to your operation, such as target changes and reservoir quality will be documented on the striplog. There is nothing more frustrating than looking back at old well files and having questions!

WellSight Systems™ is the best striplog software on the market. Nothing else even comes close!



Major US Basins



1. U.S. Onshore – Permian Basin and Eagle Ford Shale
2. U.S. Onshore – Appalachian Basin
3. U.S. Onshore – DJ Basin
4. US Onshore – Anadarko Basin
5. US Onshore – Williston Basin
6. US Offshore – Gulf of Mexico
7. Alaska – North Slope
8. Canada – Western CDN Sedimentary Basin
9. Canada – East Coast
10. Trinidad and Tobago
11. Guyana and Suriname
12. Brazil
13. Colombia
14. Norway Offshore
15. U.K. Offshore
16. Poland
17. Portugal
18. Albania
19. Offshore Mediterranean (Cyprus, Egypt and Israel)
20. Libya
21. Algeria and Tunisia
22. Chad
23. West Africa
24. South Africa, Namibia
25. Mozambique, Tanzania, Kenya, Madagascar
26. Oman, United Arab Emirates
27. Kurdistan
28. Kazakhstan
29. India
30. China
31. Russian Federation
32. Sakhalin
33. Southeast Asia Multiple countries, multiple clients
34. Australia – Northwest Shelf
35. Australia – Cooper Basin
36. Australia – Gippsland and Otway Basins

CONTACT

Dean Malhiot, P. Geo.

Technical Director
NAm Well Operations

T: +1 713 788 9270

E: dean.malhiot@tetrattech.com

Matt Knoll, P. Geo.

Operations Manager
NAm Well Operations

T: +1 587 888 6533

E: matthew.knoll@tetrattech.com

Houston, Texas

1500 CityWest Boulevard
Suite 1000
Houston, Texas 77042