



GEOSTEERING

The single most correlatable fact between high producing horizontal wells is wellbore placement.

RPS' wellsite geologists have been geosteering horizontal wellbores with high precision long before the term was coined. This task is accomplished through the collection and interpretation of real-time on-site data collected by professional, experienced, team-oriented wellsite geologists. Our Geologists help clients by removing the burden of having to correlate field data on a 24-hour basis.

GEOSTEERING

Our geosteering services leverage the expertise of our associates with vast experience in onsite, remote, and hybrid working environments. We specialize in geosteering project management and offer a range of services to ensure precise wellbore placement and optimized reservoir contact. Our geosteering solutions include:

Project creation, with integration of all data, typewells, grids, seismic, and geomodels: We create comprehensive geosteering projects that integrate various data sources, including typewells, grids, seismic data, and geomodels. This ensures a holistic understanding of the subsurface and facilitates informed decision-making.

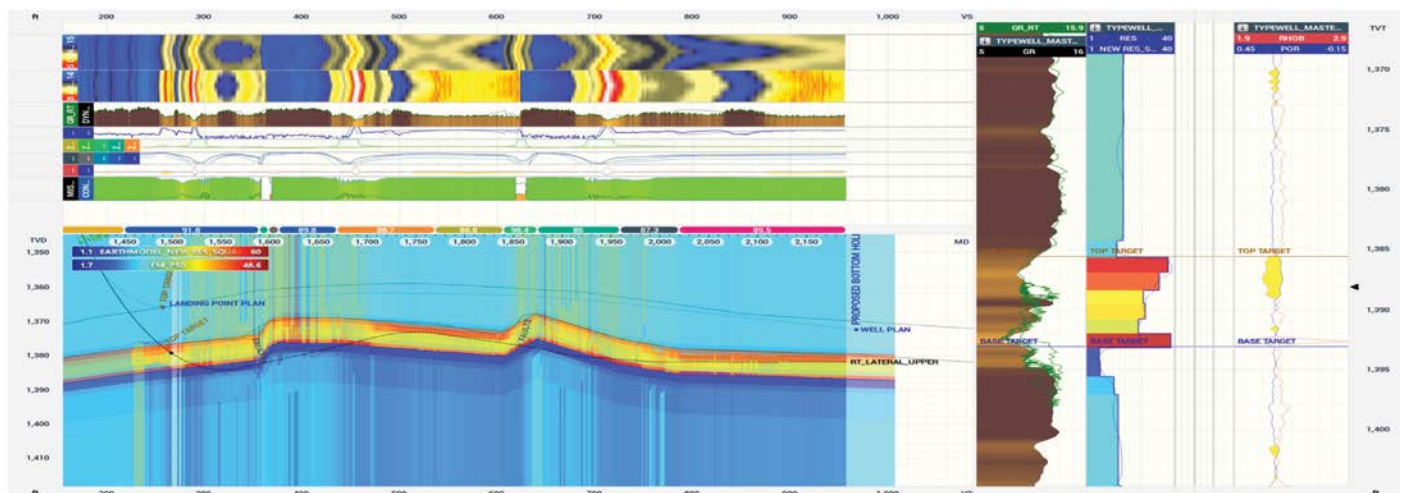
Cloud-based management with permission allocation based on requirements: Our cloud-based management system allows secure access to geosteering data, with permission allocation tailored to specific project requirements. This enables efficient collaboration and data sharing among project stakeholders.

Training for clients on software updates: We provide training sessions to clients on software updates and new geosteering techniques, such as Auto Steer and resistivity inversion modeling. This ensures that our clients stay up-to-date with the latest advancements in geosteering technology.

Analysis of nearby competitor wells to improve real-time decision making: We analyze nearby competitor wells and compare them to your well plans, providing valuable insights for real-time decision-making. This allows for proactive adjustments to optimize drilling trajectories and maximize reservoir exposure.

Today's drilling operations have reached unprecedented speeds. This has had a significant impact on sample quality and the ability to interpret real-time operational data. Gamma correlation software is one of the tools used to mitigate this issue in formations lacking significant definition in drill cuttings, similar to the Wolfcamp, Eagle Ford, Bakken, and Marcellus.

Remote steering does not remove the value of having Wellsite Geologists in the field. It adds another level of data interpretation to increase the success of proper wellbore placement.



StarSteer Image provided by ROGII



solving problems that matter

Our wellsite geologists collaborate with directional drilling teams to better understand how the bottom-hole assembly is reacting to the rocks. This ongoing conversation builds a narrative that helps fine tune the ability to achieve targets and better predict the geological influence on the bit.

our expertise

We have a 40-year long tradition of attracting, mentoring, and retaining high-end wellsite geological consultants. Our focus has always been on people. After all, the software is only as good as the correlation!



...whether In-field, Remote or In-house, our tailor-made solutions are geared towards our client's needs.

Major US Basins



1. U.S. Onshore – Permian Basin and Eagle Ford Shale
2. U.S. Onshore – Appalachian Basin
3. U.S. Onshore – DJ Basin
4. US Onshore – Anadarko Basin
5. US Onshore – Williston Basin
6. US Offshore – Gulf of Mexico
7. Alaska – North Slope
8. Canada – Western CDN Sedimentary Basin
9. Canada – East Coast
10. Trinidad and Tobago
11. Guyana and Suriname
12. Brazil
13. Colombia
14. Norway Offshore
15. U.K. Offshore
16. Poland
17. Portugal
18. Albania
19. Offshore Mediterranean (Cyprus, Egypt and Israel)
20. Libya
21. Algeria and Tunisia
22. Chad
23. West Africa
24. South Africa, Namibia
25. Mozambique, Tanzania, Kenya, Madagascar
26. Oman, United Arab Emirates
27. Kurdistan
28. Kazakhstan
29. India
30. China
31. Russian Federation
32. Sakhalin
33. Southeast Asia Multiple countries, multiple clients
34. Australia – Northwest Shelf
35. Australia – Cooper Basin
36. Australia – Gippsland and Otway Basins

CONTACT

Houston, Texas
575 N. Dairy Ashford Road
Suite 700
Houston, Texas 77079
T: +1 713 339 0824

Dean Malhiot, P. Geo.
Technical Director
NA Well Operations
T: +1 713 788 9270
E: dean.malhiot@rpsgroup.com

Matt Knoll, P. Geo.
Operations Manager
NA Well Operations
T: +1 587 888 6533
E: matt.knoll@rpsgroup.com

Richard Anstey
General Manager
NA Well Operations
T: +1 713 339 0824
E: richard.anstey@rpsgroup.com