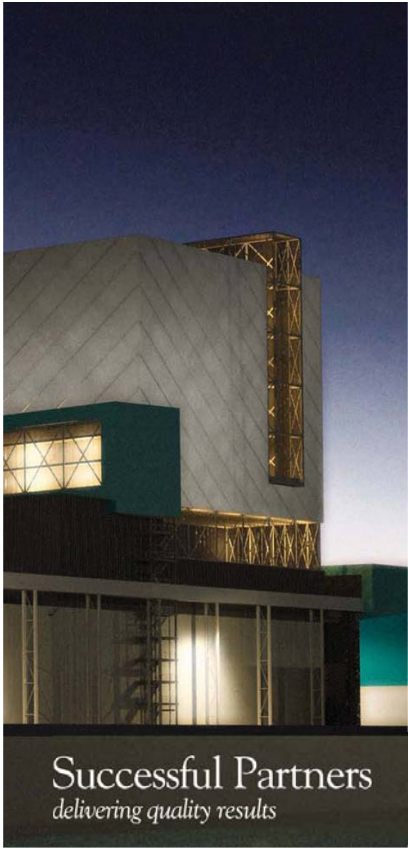
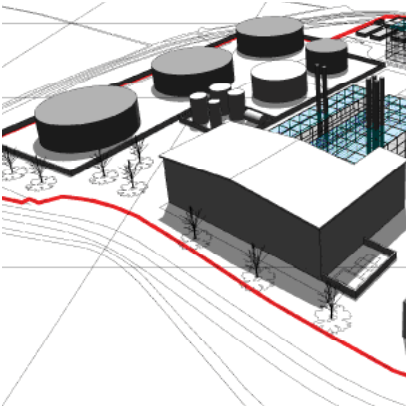




# Biomass



Successful Partners  
*delivering quality results*



## Our Company

RPS is a leading multi-disciplinary consultancy with the expertise to support clients through the development process, from planning to design to implementation.

We are acknowledged as experts in planning, transport, landscape and environmental consultancy and we are award winning architects, civil, structural and mechanical and electrical engineers.

RPS has grown into one of the world's pre-eminent consultancies by maintaining its local connections whilst underpinning these with the resources and knowledge of a global business.

We employ 5,000 people in the UK, Ireland, the Netherlands, the United States, Canada, Brazil, Africa, the Middle East, Australia and Asia. Our international presence allows us to undertake co-ordinated and integrated projects throughout the world.



Portland Energy Plant

## Our Services

RPS is one of the leading multi-disciplinary consultancies supporting clients in the Biomass sector across the UK and Ireland.

We have established an enviable reputation, supporting projects through the development stages with a range of services including:

### Mechanical & Electrical Engineering

- Technical Appraisals
- Infrastructure Design & Liaison
- Scheme Design & Development
- Third-party Technical Consultation
- Site Utilities
- Heating, Lighting, Ventilation
- Fire systems.

### Architecture

- Feasibility Option Studies
- Scheme Design
- Pre-planning Consultation
- Design Development
- Design & Access Statements.

### Planning & Consents

- Advice & Strategy
- IPC Applications
- Stakeholder Communications
- Conditions & S.106 planning obligations
- Expert Witness.

### Environmental Impact Assessments

- Surveys, Assessments, Mitigations & Environmental Statement
- Experience with legal compliance & IPC
- Protected species surveys & licenses
- Health Impact Assessment
- Sustainability Appraisal
- EPR Applications / Permits.

### Civil & Structural Engineering

- Full Structural Design
- Special Foundations (ie turbine)
- Bunker Design
- Underground Drainage.

### Port Engineering

- Port Masterplanning
- Quay Structures
- Ship loading / unloading berthing
- Full Structural inspections.

### Additional Services

- Permitting
- CDM-C
- Sustainability BREEAM
- Landscape Architecture
- Fire Engineering.

### Our Clients

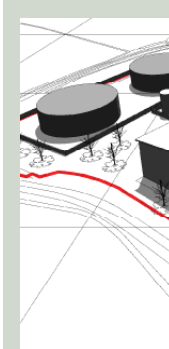
- University of York
- E.ON
- RWE npower
- Eco2
- Rose Energy
- Covanta
- RES
- PREL
- Ineos Chlor
- University of Manchester
- University of Salford
- Peterborough Renewable Energy Ltd (PREL)
- Bovis Lend Lease
- Castle Building Services
- Northumberland County Council
- Helius Energy
- Vinci
- BAM.

### Recent Appointments

- Helius Energy, Avonmouth
- E.ON, Blackburn Meadows.

## Selection of Relevant Project Experience

### Sevalco, W4B Bristol Ltd



- 49MW Biofuel Plant
- RPS provided Expert Witness services for Planning, Air Quality Assessments and Renewable Energy.

### North Blyth, RES



- 100MW Biomass CHP
- RPS provided pre-planning consultation design services including Architecture, BREEAM services and 3D dimensional representation.

### CHP Biomass Facility, Thetford



- EPR Ltd
- 40MW, 330,000 tpa biomass facility
- Planning, Environmental Impact Assessment and Design services.

### Brigg & Sleaford



- 40MW Biomass CHP
- RPS provided Architecture and Civil Engineering to support the planning application.

### Lough Neagh, Rose Energy



- 40MW Biomass CHP
- RPS provided Environmental Impact Assessment, Architecture and Civil Engineering services to support the planning application.

### Roosecote, Centrica



- EIA for proposed biomass power station
- Civil Engineering, Architecture, Geo-Environmental and Geo-technical Site Investigations and Stakeholder Engagement.

### Greenpower.54, Express Energy



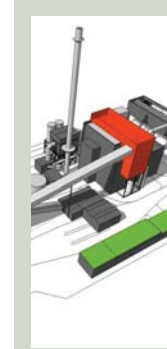
- 30MW
- Architecture and Civil Engineering for concept and planning application
- Support from local design body 'MADE'.

### University of York



- A proposed 850KW biomass boiler
- RPS provided Air Quality Analysis, Planning and plant and equipment specification
- The project is out to tender. Our appointment has been extended to full technical overview of delivery.

### Blackburn Meadows



- A new-build, 30MW biomass power station on a former industrial site
- RPS provided engineering designs for Foundations, Substructure, Drainage, External Works and Buildings Substructure.

# Why RPS?

- Ranked top Planning consultancy in the Energy sector by Planning Magazine 2011
- Leading national consultancy with a network of offices across the UK & Ireland
- Multi-disciplinary support to meet clients needs
- Highly skilled, dedicated project team
- Experience working with the industry's leading businesses.

For more information, contact

**Andy Young**  
Commercial Director  
T: +44 (0) 1636 605 700  
E: andy.young@rpsgroup.com

Creative People  
*making a difference*

## What our clients have to say

"Could we summarise by noting it is a **pleasure** to work with your company and we believe we obtain a **better overall level** of service and assistance than from any other professionals with whom we have contact." **Rob Miller, Buckingham Construction**

"Deliverables are produced to **schedule** and it is recognised that a **great deal of effort** has been invested in producing relevant, timely documents for the EIA process. It is recognised that RPS are **proactive** in their approach to design and it is anticipated that this will continue. RPS has nurtured **good working** relationships with other team members and positive relationships have been established with the Highways Agency." **Graham Earl, BAA**

"RPS consistently **add value** at all stages of our work, their teamwork and **fresh approach** ensures that the Mechanical and Electrical design is integral to the scheme and not simply a list of bolt on technologies." **Tim Landreth, Interserve**

"...**solid skills base**, proactive in problem-solving, client-focussed, **excellent planning knowledge**, strong community focus and community involvement processes, **high degree of technical skills**." **Ian Walker, The PG Group**

"The Architectural and CA support provided by RPS has been **absolutely commendable**. The level of communication and willingness to engage with all stakeholders throughout the scheme has been **excellent**. The quality of design, technical support and vision has enabled the scheme to deliver in accordance with the brief. A **real achievement** considering the constraints of time and budget. Problem solving and value engineering was a necessary element of this project from the start. Negotiating and maintaining the goodwill of all involved throughout the process was a **key skill** which contributed to a **successful outcome** and should not be underestimated. **Very impressed** and thoroughly enjoyed working with RPS." **Sharon Williams, Nottingham County Council**

"With regards to the Airdrie EfW, a very **professional** and **comprehensive** response to our enquiry." **Roger Jackson, Vinci**